

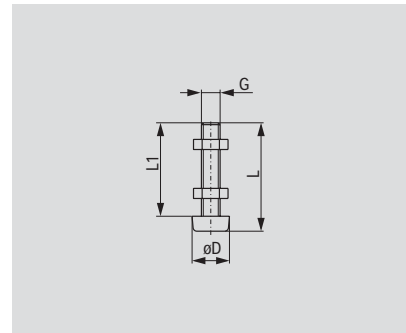
Adjustment spindles incl. 2 fastening nuts

Product features

- Vulcanized neoprene thrust pad, low form, resin free (85° Shore)
- Heat-treated, galvanised and passivated
- temperature resistant -20° bis $+80^{\circ}$

Models 205208-M, 201208-M, 305208-M, 213208-M, 307208-M

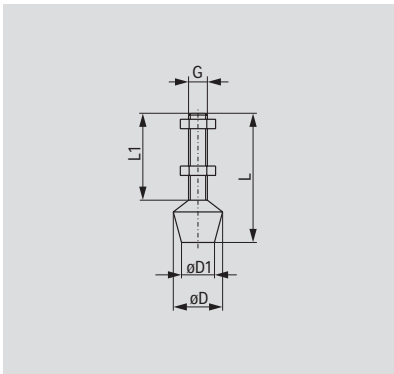
Model no.	Thread [G] [mm]	Head \varnothing D [mm]	Overall length L [mm]	Thread length L1 [mm]	
205208-M	M4	8	22	19,2	
201208-M	M4	8	32	29,2	
305208-M	M5	10	29	24	
213208-M	M5	10	34	29	
307208-M	M8	19	43	34	



Product features

- Vulcanized neoprene thrust pad, resin free (85° Shore)
- Heat-treated, galvanised and passivated
- temperature resistant -20° bis +80°

Models 202208-M, 215208-M, 225208-M, 507208-M 240208-M, 235208-M, 247208-M



Model no.	Thread [G]	Head ø D	Overall length L	Thread length L1	Pressure contact ø D1
	[mm]	[mm]	[mm]	[mm]	[mm]
202208-M	M6	16	44	30	12
215208-M	M6	16	54	40	12
225208-M	M8	21	53	35	14
507208-M	M8	21	83	65	14
240208-M	M10	26	79	55	20
235208-M	M10	26	120	95	20
247208-M	M12	30	97	68	24



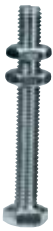
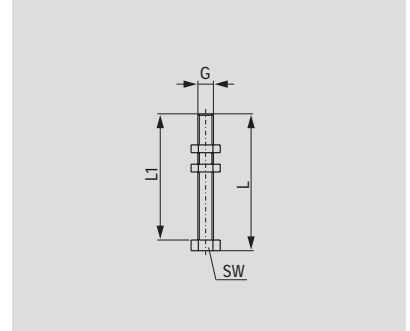
Adjustment spindles incl. 2 fastening nuts

Product features

- Hexagonal Head
- Heat-treated, galvanised and passivated

Models 205203-M, 202203-M, 207203-M, 210203-M 220203-M, 250203-M, 267203-M

Model no.	Thread [G] [mm]	Overall length L [mm]	Thread length L1 [mm]	Wrench size SW [mm]
205203-M	M6	49	45	10
202203-M	M6	84	80	10
207203-M	M8	75,5	70	13
210203-M	M10	77	70	17
220203-M	M12	88	80	19
250203-M	M16	110	100	24
267203-M	M16	130	120	24



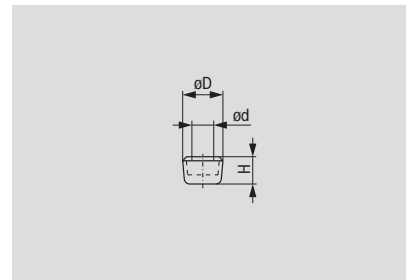
Neoprene pad

Product features

- Resin free
- 70° Shore
- For hex. head adjustment spindle

Models 225108, 225119, 235119

Model no.	For hex. head spindle	øD	ød	H
225108	M6	15	8	10
225119	M8	19	9	13
235119	M10	22	10	14

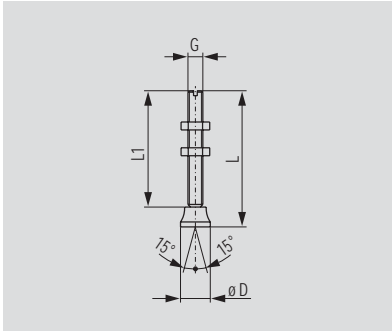


Swivel foot spindle incl. 2 fastening nuts

Product features

- Swivel foot
- Heat-treated, galvanised

Models 207206-M, 507206-M, 210206-M, 250206-M



Model no.	Thread [G] [mm]	Head ø D [mm]	Overall length L [mm]	Thread length L1 [mm]	
207206-M	M6	12	62	54	
507206-M	M8	16	73	62,5	
210206-M	M10	20	84	71	
250206-M	M12	25	120	105	

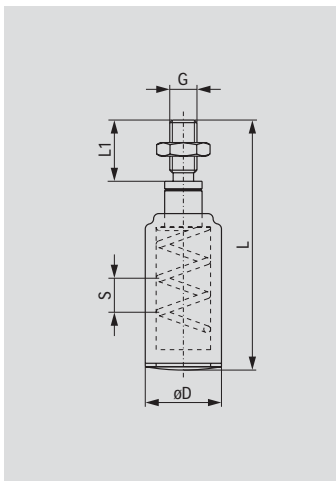


Pressurematic spindle incl. 1 fastening nut

Product features

- For straight line action clamps

Models 905-M, 920-M



Model no.	Thread [G] [mm]	Head ø D [mm]	Overall length L [mm]	Thread length L1 [mm]	Compression max. S [mm]	Spring constant [N/mm]	max [N]
905-M	M8	22,2	63	18	4,5	120	600
920-M	M10	22,2	91	27	10	80	1.400



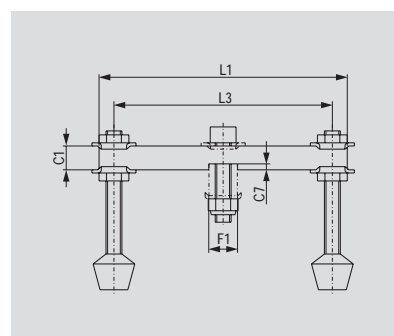
Cross arm set

Consisting of

- 1 x cross arm
- 2 x adjustment spindles with neoprene thrust pads vulcanised, resin-free, inc. 2 x fastening nuts
- 4 x flange washers
- 1 x screw incl. 1 x fastening nut, self-locking

Models 207426-Q, 210440-Q

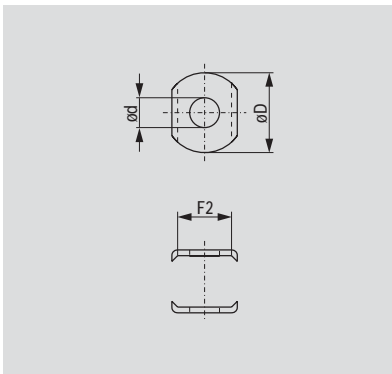
Model no.	For models with U-shaped clamping arm	C1 [mm]	C7 [mm]	F [mm]	F1 [mm]	L1 [mm]	L3 [mm]	Adjustment spindles	
207426-Q	207, 225, 227	12	3	9	14,5	125	110	507208-M	
210440-Q	210, 235, 237	16	4	11	19	149	130	240208-M	



Product features

- Galvanised and passivated

Models **105106-M, 102111-M, 215105-M, 507107-M**
235106-M, 247109-M, 267102



Model no.	For adjustment spindle	øD [mm]	ød [mm]	F2 [mm]			
105106-M	M4	11	4,3	8,3			
102111-M	M5	14	5,3	9,8			
215105-M	M6	17,5	6,7	12,7			
507107-M	M8	22	8,5	15			
235106-M	M10	25	10,5	19,5			
247109-M	M12	32	13,5	23,2			
267102	M16	36,5	16,8	26,2			

Flange washers are delivered in pairs

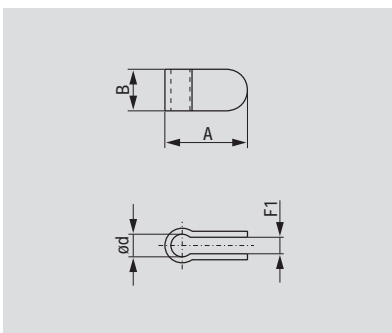


Spindle retainer

Product features

- Galvanised and passivated

Models **207105-M, 210114-M, 247110-M, 110122**



Model no.	For adjustment spindle	A [mm]	B [mm]	ød [mm]	F1 [mm]		
207105-M	M8	32	16	8,2	6		
210114-M	M10	38	20	13	8		
247110-M	M12	41	22,2	14,4	9,7		
110122	M16	47,6	31,8	16,3	9,5		

